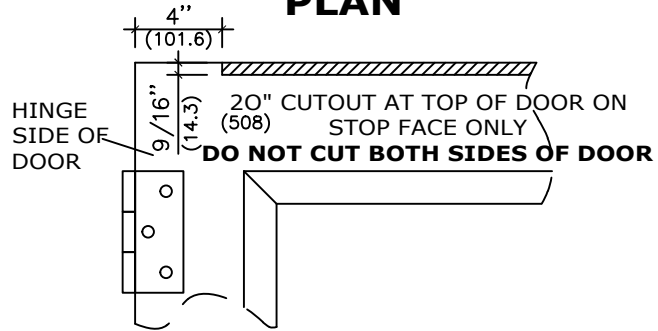
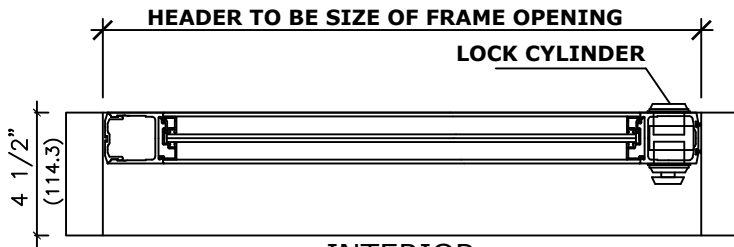


**INTERIOR PLAN**

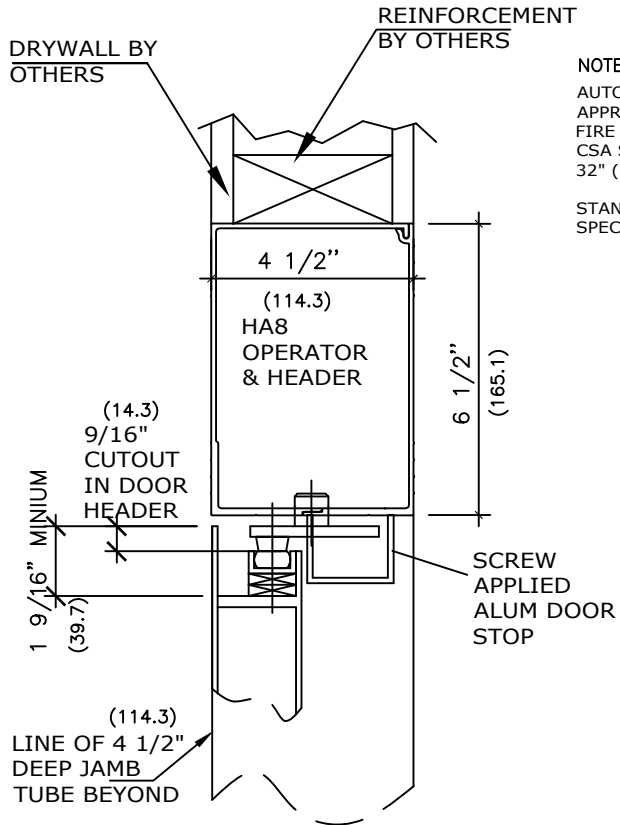


**ELEVATION OF DOOR**



**INTERIOR HORIZONTAL SECTION**

NOTE:  
ENTREMATIC GROUP AB, RESERVES THE RIGHT TO CHANGE & IMPROVE IT'S PRODUCTS & SPECIFICATIONS WITHOUT NOTICE.



**VERTICAL SECTION**

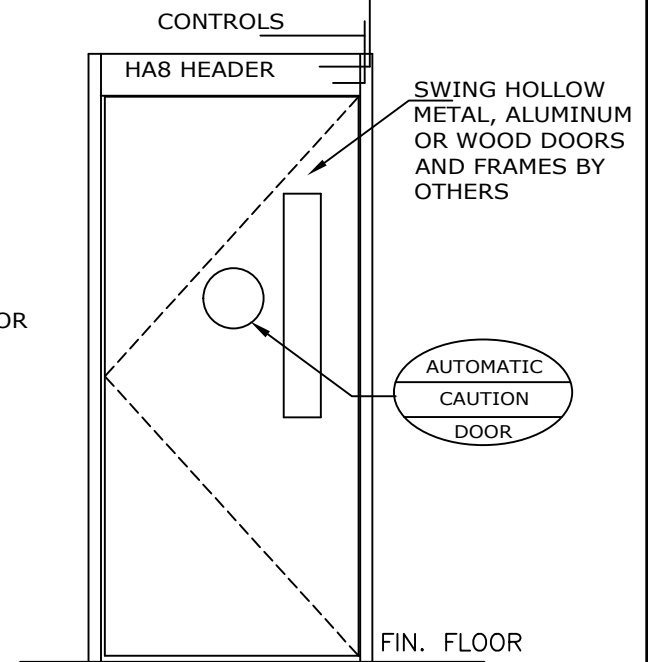
**APPLICATION:**  
LOW ENERGY OPERATOR  
LEFT HAND BUTT HUNG/OFFSET PIVOT

NOTE: DRAWING IS DIMENSIONED IN BOTH INCHES & METRIC (mm)  
AUTOMATIC SWING DOOR OPERATOR SHALL BE "HA8" CETL USA APPROVED, CONFORMING TO UL STD. 325 & ANSI-BHMA STD. A156.19 FIRE RATED TO UL STD. 10(B); UL STD. 10(C), CERTIFIED TO CAN. CSA STD. C22.2#247 AS MANUFACTURED BY ENTREMATIC GROUP AB. 32" (813) CLEAR OPENING REQUIRED TO MEET ADA REQUIREMENT.

STANDARD FINISH: ANODIZED, CLEAR; DARK BRONZE;  
SPECIAL FINISHES ARE AVAILABLE

120V AC. 60HZ. 15A.

BY ELEC. CONTRACTOR.



**ELEVATION**

**ENTREMATIC**

TEL. 877-348-6837 (CANADA)  
www.ditecentrematic.ca  
TEL. 866-901-4284 (USA)  
www.ditecentrematic.us

JOB NAME:	SHEET NO. <b>11</b>
LOCATION:	SECTION <b>HA</b>
DOOR NUMBER:	