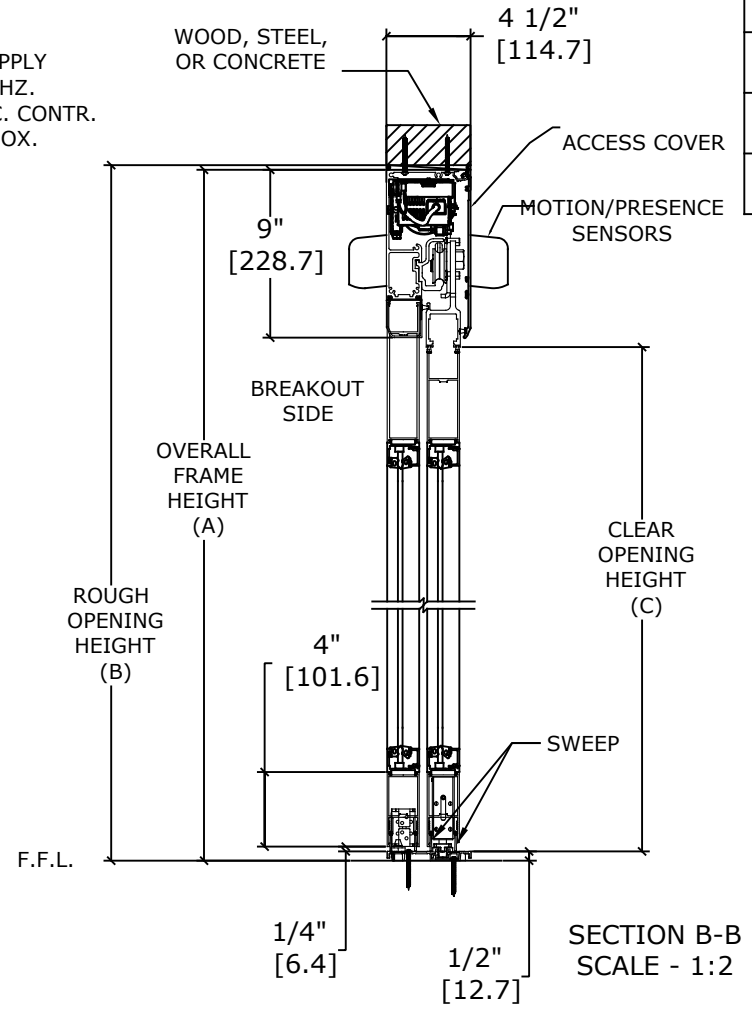
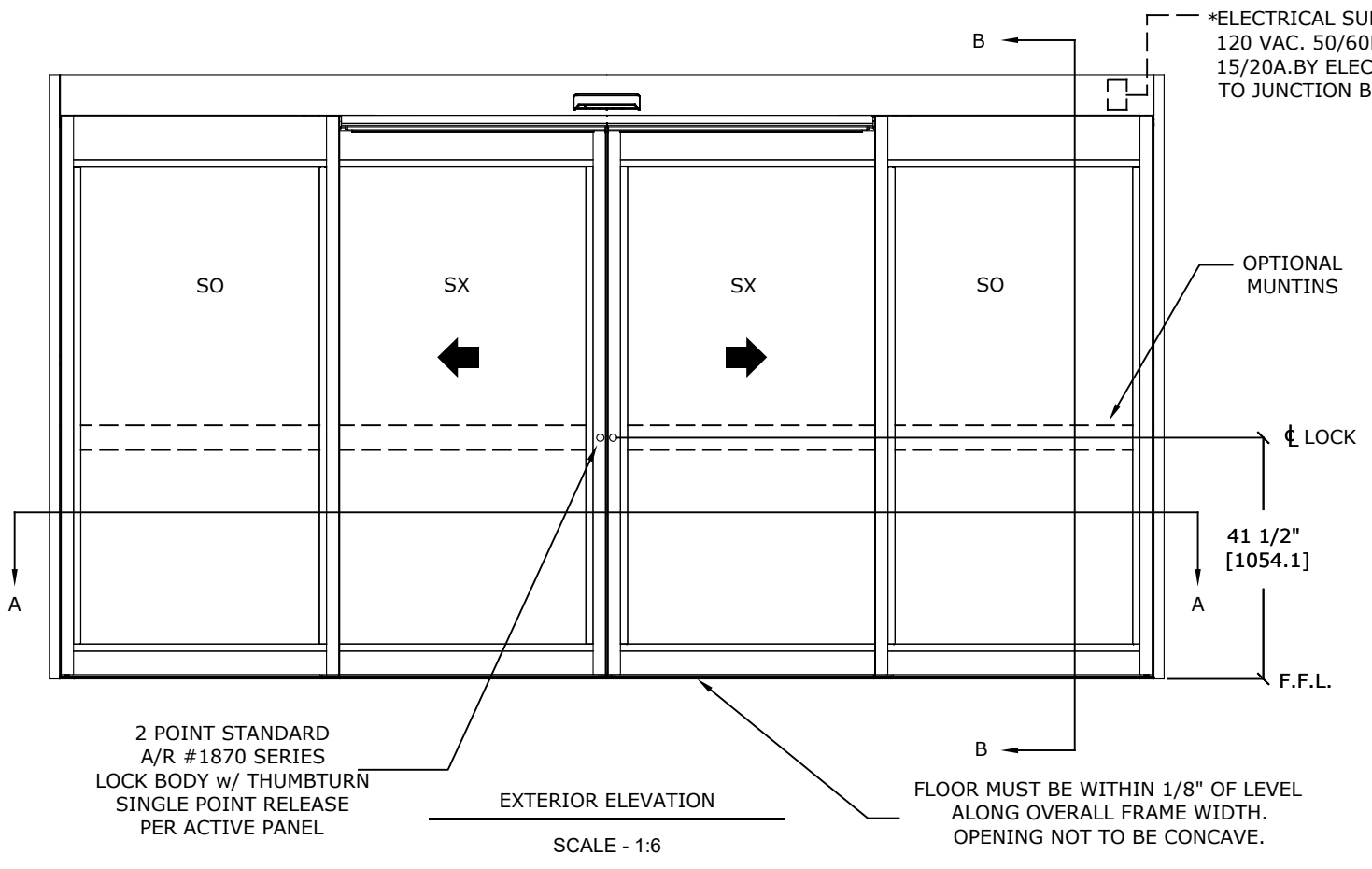


**DS-20H-2-FB**  
Hurricane, Overhead Concealed, Narrow Stile,  
Full Breakout, Bi-Part  
Non-Impact



	OFW (A)	ROUGH OPENING (B)	CLEAR OPENING (C)	DOOR WIDTH (D)	BREAKOUT WIDTH (E)
AT MAX WIDTH	192" [4876.8]	192 1/2" [4889.5]	81 5/8" [2060.6]	48 5/8" [1235.1]	175 9/16" [4459.3]
WIDTH FORMULA	B - 1/2" B - [12.7]	A + 1/2" A + [12.7]	A/2 - 13 7/8" A/2 - [352.4]	A/4 + 5/8" A/4 + [15.9]	A - 16 7/16" A - [417.5]
AT MAX HEIGHT	96" [2438.4]	96 1/4" [2444.75]	86" [2184.4]		
HEIGHT FORMULA	B - 1/4" B - [6.35]	A + 1/4" A + [6.35]	A - 10" A - [254.0]		

GLASS FORMULA: OFW /4 - 4 3/4 [120.7] X OFH -20 1/2 [520.70]

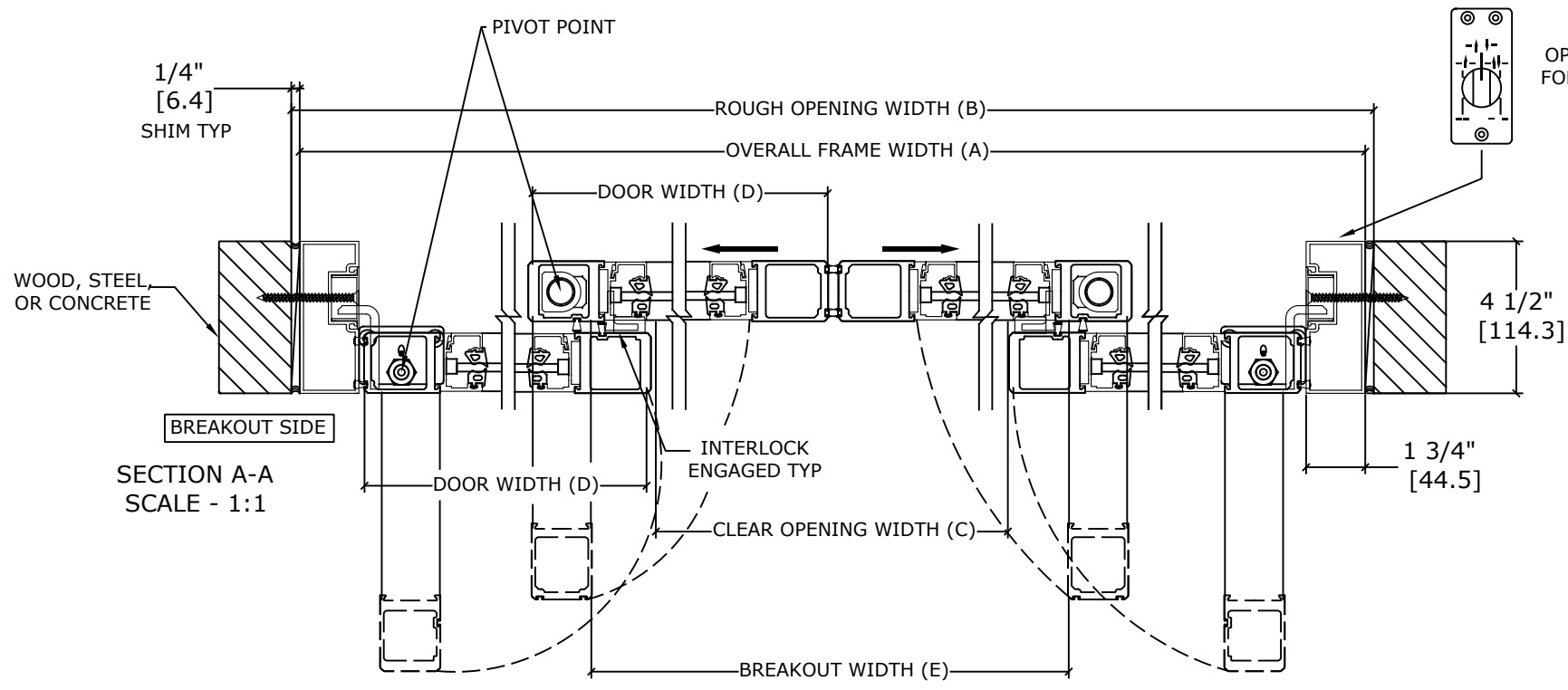
- NOTES:**
- STANDARD PACKAGE CONSISTS OF:
- STANDARD FINISH:
  - CLASS 1, .018MM, CLEAR- AA-M12C22A41
  - CLASS 1, .018MM, DARK BRONZE- AA-M12C22A44
  - AUTOMATIC OPERATOR
  - NARROW STILE RAILS
  - THRESHOLD
  - 2-POINT LOCK WITH LOCK INDICATOR
  - 1/4" [6mm] TEMPERED GLASS
  - DRY GLAZED
  - MOTION/PRESENCE SENSORS
  - 5-POSITION KNOB SWITCH
  - BALL CATCH
  - DUAL CONCEALED SWEEPS IN SX & SO PANELS
  - 4" BOTTOM RAILS

- OPTIONS AVAILABLE:
- SPECIAL FINISHES
  - PANIC EXIT DEVICE
  - THRESHOLD LEAD-UP
  - RECESSED THRESHOLD
  - TRUE DIVIDED MUNTINS
  - 7"/10" BOTTOM RAILS
  - MEDIUM STILES
  - CRASH BARS

FOR MAXIMUM CURRENT DRAW, SEE PRODUCT SPECIFICATION,  
INSTALLATION INSTRUCTIONS, OR THE UL LABEL ON THE EQUIPMENT.

TEST PROTOCOLS: TAS 201, TAS 202 & TAS 203  
FLORIDA PRODUCT APPROVAL # FL33056

REFER TO RELEVANT [LOCAL, STATE, NATIONAL, OR AHJ]  
BUILDING CODE FOR MIN DOOR HEIGHT & MIN/MAX WIDTH  
ALLOWABLE FOR EGRESS REQUIREMENT IN CONJUNCTION  
WITH TABLE.



OPTIONAL FACTORY PREP  
FOR SWITCH LOCATION @  
74-1/2"H [1892.3]

DESIGN PRESSURE RATING	
WHERE WATER INFILTRATION REQUIREMENT IS NEEDED	WHERE WATER INFILTRATION REQUIREMENT IS NOT NEEDED
NOT APPROVED	+/- 75 PSF

DWG NO.

DRN BY	SJF	DATE	8/27/20	CHK BY	DATE	REV.	0.1	DATE	8/30/20
--------	-----	------	---------	--------	------	------	-----	------	---------

SECTION NO.

SHEET NO.

**ENTREMATI DS20H 2**