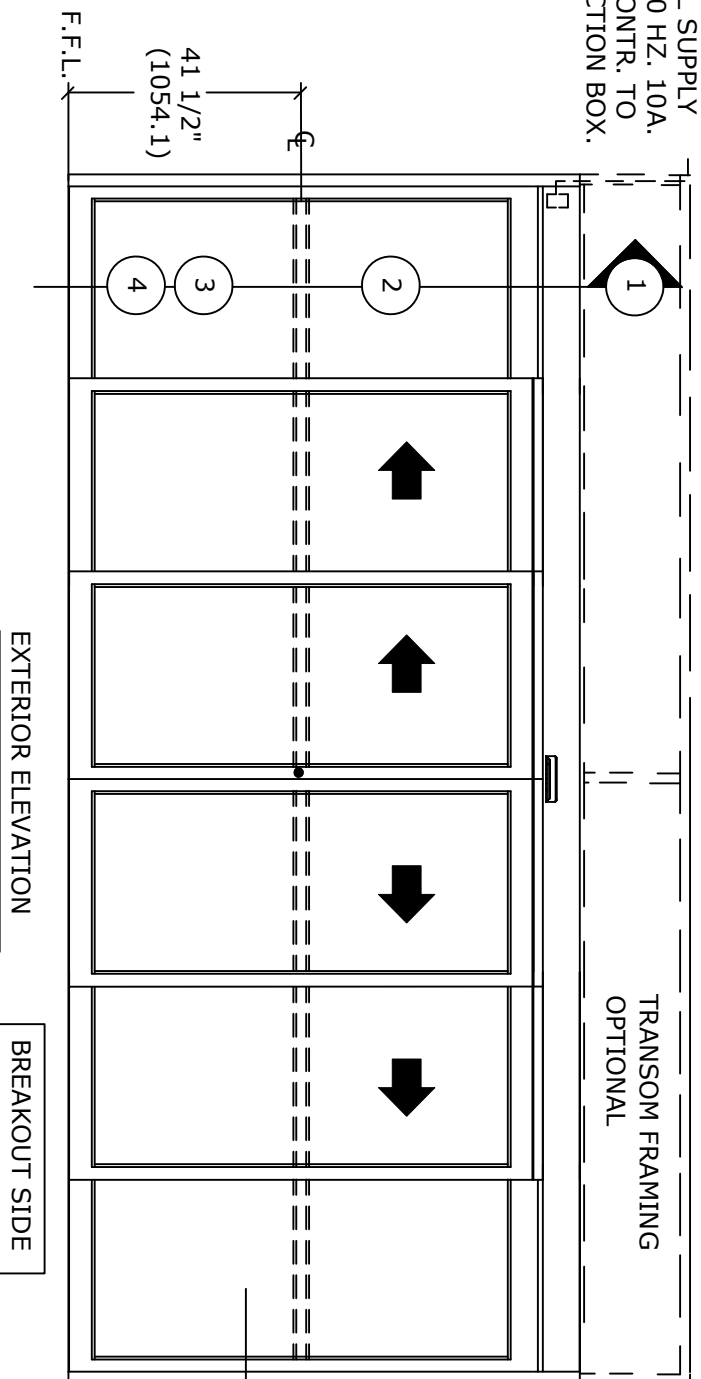
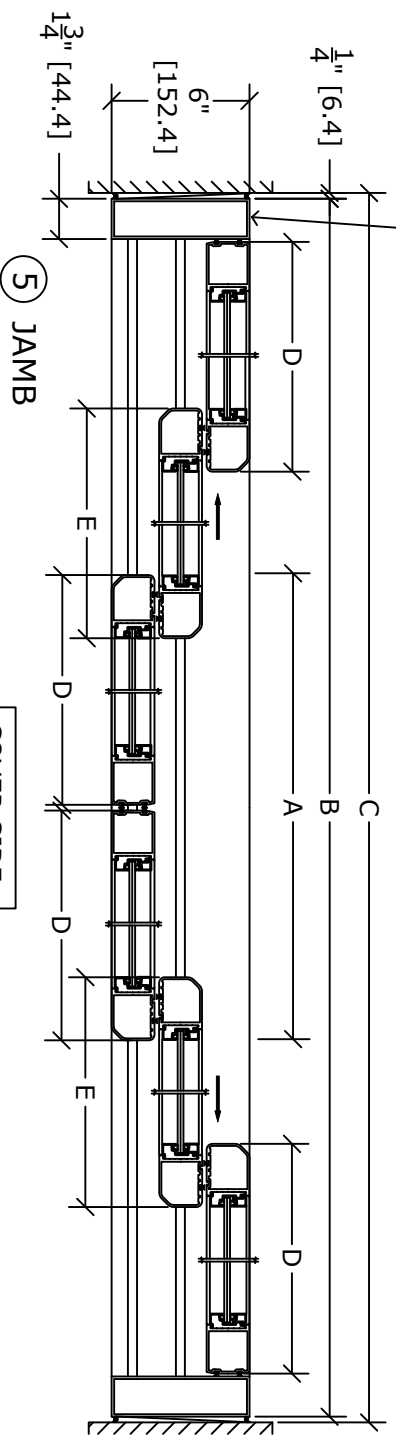


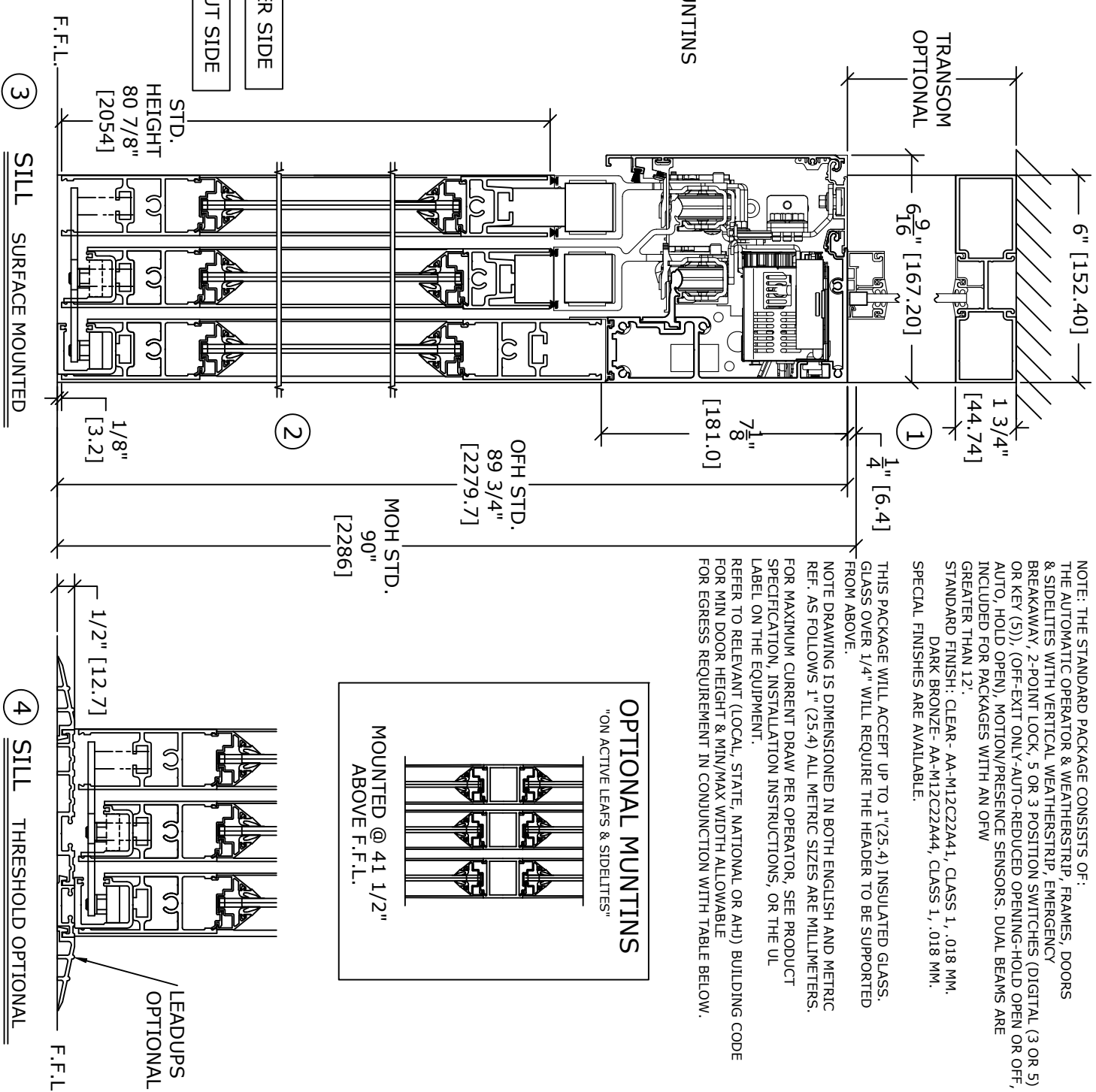
ELECTRICAL SUPPLY
110 VAC. 60 HZ. 10A.
BY ELEC. CONTR. TO
JUNCTION BOX.



Optional Factory Prep
Switch Location @
74-1/2"H



COVER SIDE
BREAKOUT SIDE



OPTIONAL MUNTINS
"ON ACTIVE LEAFS & SIDELITES"
MOUNTED @ 41 1/2"
ABOVE F.F.L.

NOTE: THE STANDARD PACKAGE CONSISTS OF:
THE AUTOMATIC OPERATOR & WEATHERSTRIP, FRAMES, DOORS
& SIDELITES WITH VERTICAL WEATHERSTRIP, EMERGENCY
BREAKAWAY, 2-POINT LOCK, 5 OR 3 POSITION SWITCHES (DIGITAL (3 OR 5)
OR KEY (5)), (OFF-EXIT ONLY-AUTO-REDUCED OPENING-HOLD OPEN OR OFF,
AUTO, HOLD OPEN), MOTION/PRESENCE SENSORS. DUAL BEAMS ARE
INCLUDED FOR PACKAGES WITH AN OFW
GREATER THAN 12".
STANDARD FINISH: CLEAR-AA-M12C22A41, CLASS 1, .018 MM.
DARK BRONZE-AA-M12C22A44, CLASS 1, .018 MM.
SPECIAL FINISHES ARE AVAILABLE.

THIS PACKAGE WILL ACCEPT UP TO 1"(25.4) INSULATED GLASS.
GLASS OVER 1/4" WILL REQUIRE THE HEADER TO BE SUPPORTED
FROM ABOVE.

NOTE DRAWING IS DIMENSIONED IN BOTH ENGLISH AND METRIC
REF. AS FOLLOWS 1" (25.4) ALL METRIC SIZES ARE MILLIMETERS.
FOR MAXIMUM CURRENT DRAW PER OPERATOR, SEE PRODUCT
SPECIFICATION, INSTALLATION INSTRUCTIONS, OR THE UL
LABEL ON THE EQUIPMENT.
REFER TO RELEVANT (LOCAL, STATE, NATIONAL OR AHD) BUILDING CODE
FOR MIN DOOR HEIGHT & MIN/MAX WIDTH ALLOWABLE
FOR EGRESS REQUIREMENT IN CONJUNCTION WITH TABLE BELOW.

DS20 OHC	DOOR OPENING A	OVERALL FRAME WIDTH B	MASONRY OPENING WIDTH C	ACTIVE & SIDELITE LEAF WIDTH D & E
10"	59 3/16" (1503.4)	120" (3048)	120 1/2" (3060.7)	21 3/16" (538.2)
12"	75 3/16" (1909.8)	144" (3657.6)	144 1/2" (3670.3)	25 3/16" (639.8)
14"	91 3/16" (2316.2)	168" (4267.2)	168 1/2" (4279.9)	29 3/16" (741.4)
* 16"	107 3/16" (2722.6)	192" (4876.8)	192 1/2" (4889.5)	33 3/16" (843)
KEY	(2B/3)-20 13/16 (2B/3)-(528.6)	(C-1/2") (B+12.7)	(B+1/2") (B/6)+(30.2)	
	WIDTH - "D" & "D"	(B/6)-3 5/8" (B/6)-(92.08)		
	WIDTH - "E"	(B/6)-3 7/8" (B/6)-(98.43)		
	HEIGHT	OFH-15 7/8" OFH-(403.2)		

* MAXIMUM DOWNWARD HEADER DEFLECTION IS .157" [4MM].
** NARROW STILE RAILS W/ 1/4" GUTTER, NO MUNTINS

DWG NO. _____
DWN BY SAK DATE 5/5/20 CHK BY -- DATE -/-/-- REV. 0.1 DATE -/-/--

ENTRE//MATIC

SECTION NO. DS SHEET NO. 12