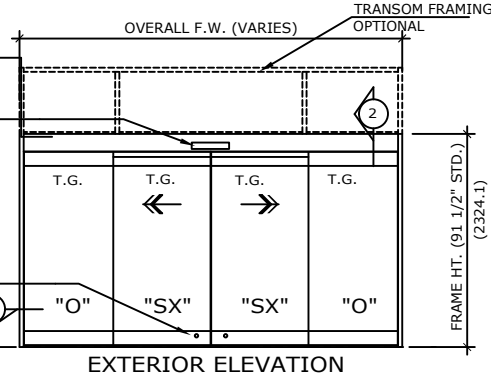


ELECTRICAL SERVICE  
120 VAC, 60 HZ, 15A  
TO JUNCTION BOX  
BY ELECTRICAL  
CONTRACTOR.

MOTION/ PRESENCE  
INFRARED SENSOR

M.S. LOCK

FIN. FLOOR

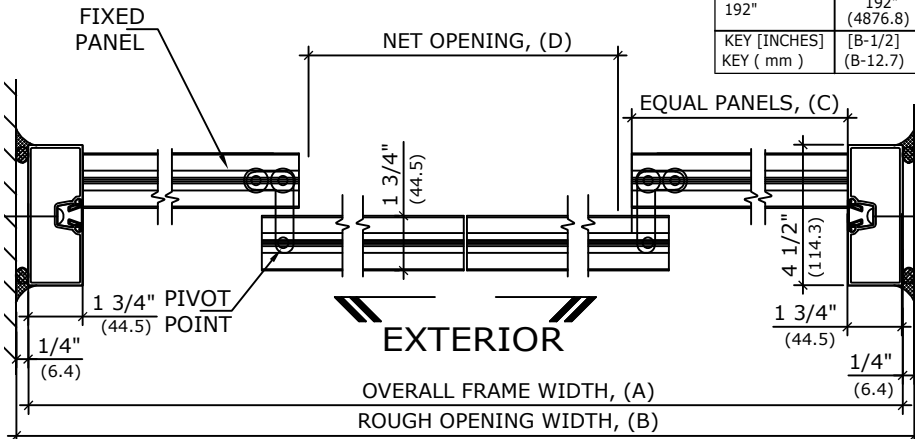


EXTERIOR ELEVATION



EMERGENCY  
BREAKAWAY  
PLAN VIEW

EXTERIOR  
BREAKOUT DIM'N (E)



**1 HORIZONTAL SECTION**

REFER TO RELEVANT (LOCAL, STATE, NATIONAL OR AHJ) BUILDING CODE FOR MIN DOOR HEIGHT & MIN/MAX WIDTH ALLOWABLE FOR EGRESS REQUIREMENT.  
NOTE:  
ENTREMATIc GROUP AB, RESERVES THE RIGHT TO CHANGE & IMPROVE IT'S PRODUCTS & SPECIFICATIONS WITHOUT NOTICE.

AUTOMATIC SLIDING DOOR OPERATOR SHALL BE "DS18" CUL USA APPROVED, CONFORMING TO UL STD. 325 & ANSI-BHMA STD. A156.10 CERTIFIED TO CAN. CSA STD. C22.2#24-93 AS MANUFACTURED BY ENTREMATIc GROUP AB.

STANDARD FINISH: ANODIZED, CLEAR; DARK BRONZE;  
SPECIAL FINISHES ARE AVAILABLE

**UNIT DESCRIPTION**

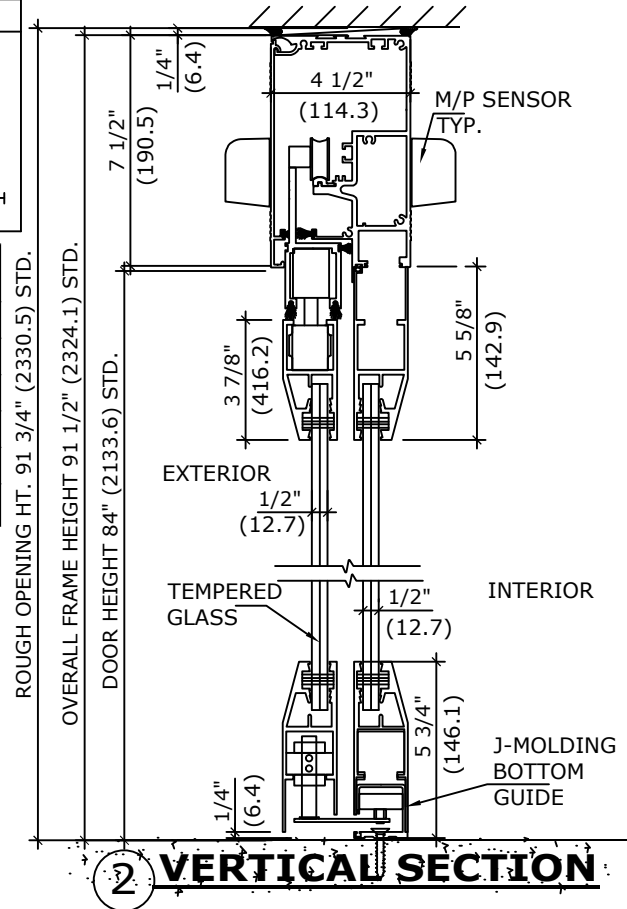
**DITEC**

O-SX-SX-O : OVERHEAD CONCEALED FIXED SIDELITE BI-PART SLIDING DOOR SYSTEM, ALL GLASS STILE DOORS.  
STD. PACKAGE SHALL INCLUDE AUTOMATIC OPERATOR, FRAME AND DOORS, HORIZONTAL RAILS WITH SWEEPS, BRUSH-PILE WEATHER STRIPPING, EMERGENCY BREAKAWAY, GLAZING SHOES FOR TEMPERED GLASS, FLOOR LOCKING MS LOCK, CONCEALED BOTTOM GUIDE IN 'J' MOLDING OF FIXED PANEL, 3-POSITION SWITCH & MOTION/PRESENCE SENSORS ON BOTH SIDES OF UNIT.

SIZE	OVERALL FRAME WIDTH A	ROUGH OPENING B	EQUAL PANELS C	NET DOOR OPENING D	BREAK OUT DIM'N E
96"	96" (2438.4)	96 1/2" (2451.1)	24" (620.7)	38" (965.2)	44 1/2" (1130.3)
120"	120" (3048)	120-1/2" (3060.7)	30" (773.1)	50" (1270)	56 1/2" (1435.1)
144"	144" (3657.6)	144-1/2" (3670.3)	36" (925.5)	62" (1574.8)	68 1/2" (1739.9)
168"	168" (4267.2)	168 1/2" (4279.9)	42" (1077.9)	74" (1879.6)	80 1/2" (2044.7)
192"	192" (4876.8)	192-1/2" (4889.5)	48" (1230.3)	86" (2184.4)	92 1/2" (2349.5)
KEY [INCHES]	[B-1/2]	[A+1/2]	[A/4]	[A/2-10]	[A/2-3 1/2]
KEY (mm)	(B-12.7)	(A+12.7)	(A/4)	(A/2-254)	(A/2-88.9)

APPLICATION:  
ALL GLASS STILE, BI-PART, AUTOMATIC  
SLIDING DOOR SYSTEM.

NOTE: DRAWING IS DIMENSIONED IN BOTH INCHES & METRIC (mm)



**2 VERTICAL SECTION**

**ENTREMATIc**

TEL. 877-348-6837 (CANADA)  
www.ditecentrematic.ca  
TEL. 866-901-4284 (USA)  
www.ditecentrematic.us

SHEET TITLE:			SHEET NO. <b>9</b>
ARCHITECT:			
CONTRACTOR:			SECTION <b>DS</b>
SCALE:	DRAWN BY:	DATE:	