

AUTOMATIC SLIDING DOOR OPERATOR SHALL BE "DS18" CUL USA APPROVED, CONFORMING TO UL STD. 325 & ANSI-BHMA STD. A156.10 CERTIFIED TO CAN. CSA STD. C22.2#24-93 AS MANUFACTURED BY ENTREMATIC GROUP AB.

STANDARD FINISH: ANODIZED, CLEAR; DARK BRONZE; SPECIAL FINISHES ARE AVAILABLE

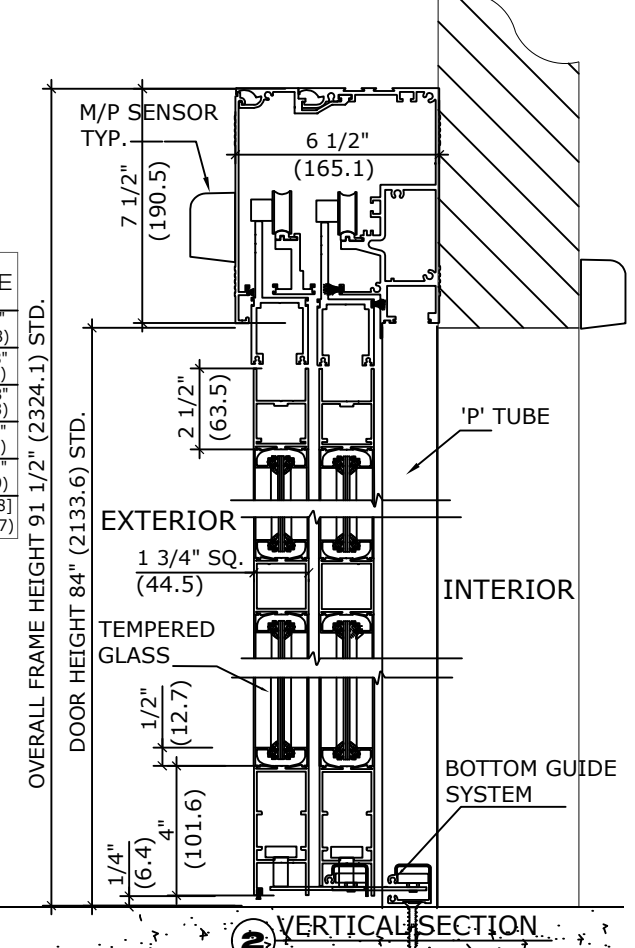
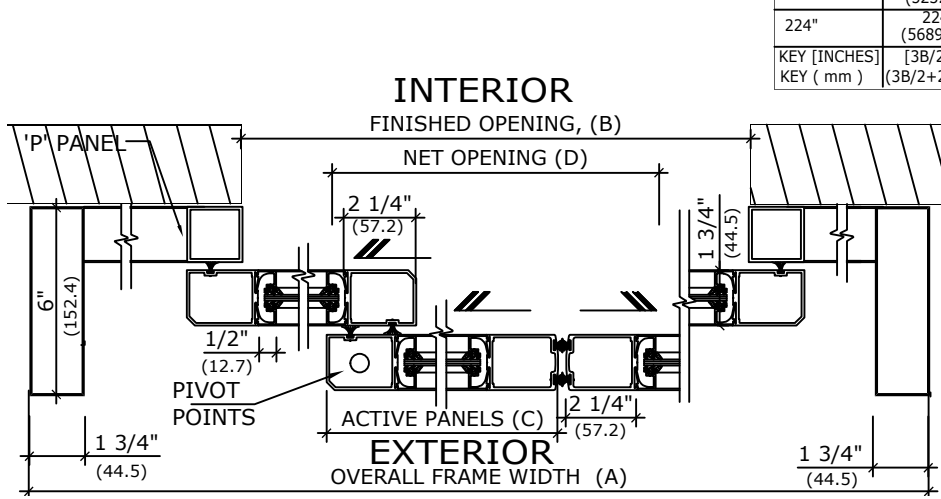
APPLICATION:
TELESCOPIC SURFACE MOUNT BI-PART,
AUTOMATIC SLIDING DOOR SYSTEM.

NOTE: DRAWING IS DIMENSIONED IN BOTH INCHES & METRIC (mm)

OPTIONAL HOLD-OPEN BEAMS C/L AT 24 & 48" AFF (609.6 & 1219.2)

UNIT DESCRIPTION	
DITEC	
P-X-SX-SX-X-P : SURFACE MOUNTED TELESCOPIC SLIDER BI-PART SYSTEM WITH 'P' PANEL, NARROW STILE DOORS.	
PACKAGE SHALL INCLUDE AUTOMATIC OPERATOR, FRAME AND DOORS WITH MUNTINS, BOTTOM RAILS WITH CONCEALED SWEEPS, BRUSH-PILE WEATHER STRIPPING, EMERGENCY BREAKAWAY, MS LOCK, GLAZING STOPS FOR TEMPERED GLASS, DOOR GUIDE SYSTEM SHALL BE CONCEALED IN BOTTOM HORIZONTAL RAILS, 3-WAY SWITCH & MOTION/PRESENCE SENSORS ON BOTH SIDES OF UNIT.	

SIZE	OVERALL FRAME WIDTH A	FINISHED OPENING B	ACTIVE PANELS C	NET DOOR D	MAX B/OUT DIM'N E
152"	152" (3860.8)	96" (2438.4)	26 1/4" (666.8)	81" (2057.4)	88 3/8" (2244.8)
170"	170" (4318)	108" (2743.2)	29 1/4" (743)	93" (2362.2)	100 3/8" (2549.5)
188"	188" (4775.2)	120" (3048)	32 1/4" (819.2)	105" (2667)	112 3/8" (2854.3)
206"	206" (5232.4)	132" (3352.8)	35 1/4" (895.4)	117" (2971.8)	124 3/8" (3159.1)
224"	224" (5689.6)	144" (3657.6)	38 1/4" (971.6)	129" (3276.6)	136 3/8" (3463.9)
KEY [INCHES]	[3B/2+8]	[A-8]2/3	[B/4+2 1/4]	[B-15]	[B-7 5/8]
KEY (mm)	(3B/2+203.2)	(A-203.2)2/3	(B/2+57.2)	(B-381)	(B-193.7)



1 HORIZONTAL SECTION

REFER TO RELEVANT (LOCAL, STATE, NATIONAL OR AHJ) BUILDING CODE FOR MIN DOOR HEIGHT & MIN/MAX WIDTH ALLOWABLE FOR EGRESS REQUIREMENT.

NOTE:
ENTREMATIC GROUP AB, RESERVES THE RIGHT TO CHANGE & IMPROVE IT'S PRODUCTS & SPECIFICATIONS WITHOUT NOTICE.

ENTREMATIC

TEL. 877-348-6837 (CANADA)
www.ditecentrematic.ca

TEL. 866-901-4284 (USA)
www.ditecentrematic.us

SHEET TITLE:			SHEET NO.
ARCHITECT:			24
CONTRACTOR:			SECTION
SCALE:	DRAWN BY:	DATE:	DS