

**IMPORTANT NOTES**

- A. HEADER BOX MUST BE FIELD PREPPED FOR INSTALLATION. FASTENING HARDWARE DEPENDANT UPON MOUNTING SURFACE OR WALL STRUCTURE OF INSTALLATION AREA IS NOT SUPPLIED.
- B. ACCESS HOLES ARE GENERALLY LOCATED THROUGH THE BACK OF THE HEADER BOX FOR CLEAN CONCEALED LOOK; ALTERNATIVELY THEY CAN BE THROUGH THE TOP OR ENDPLATE OF THE BOX WITH WIRING RUN THROUGH CODE APPROVED SURFACE CONDUIT.
- 1. ELECTRICAL SERVICE AND ALL HARD WIRING TO BE SUPPLIED BY QUALIFIED PROFESSIONAL CONTRACTOR WITHIN THE GUIDELINES OF THE ENFORCED LOCAL ELECTRICAL CODES.
- 2. ACCESS HOLES ARE ALWAYS AWAY FROM HINGE SIDE OF HEADER TO ENSURE CABLES & WIRING RUNS DO NOT INTERFERE WITH & GET CHAFED BY THE MECHANICS OF THE OPERATOR WITHIN THE HEADER.
- 3. HIGH VOLTAGE INCOMING POWER & LOW VOLTAGE WIRES CANNOT SHARE THE SAME ACCESS HOLE. HIGH VOLTAGE WIRES MUST BE ROUTED IN CONDUIT & SECURED AWAY FROM ALL LOW VOLTAGE WIRES.
- 4. IF HEADER IS MOUNTED ON ALUMINUM FRAMING, HIGH & LOW VOLTAGE WIRING CAN BE ROUTED THROUGH VERTICAL & HORIZONTAL TUBES.
- 5. INCOMING (MAIN) POWER GROUND WIRE CANNOT SHARE THE SAME GROUNDING STUD AS SYSTEM GROUND WIRE. GROUND INCOMING (MAIN) POWER ACCORDINGLY.

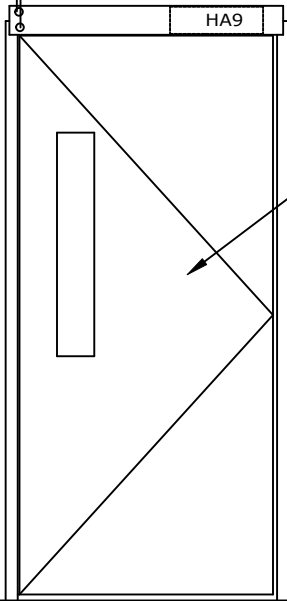
**APPLICATION: LOW PROFILE,  
LOW ENERGY OPERATOR WIRING  
REQUIREMENTS**

NOTE: DRAWING IS DIMENSIONED IN BOTH INCHES & METRIC (mm)  
AUTOMATIC SWING DOOR OPERATOR SHALL BE "HA9" CETL USA APPROVED, CONFORMING TO UL STD. 325 & ANSI-BHMA STD. A156.19 FIRE RATED TO UL STD. 10(B); UL STD. 10(C), CERTIFIED TO CAN. CSA STD. C22.2#247 AS MANUFACTURED BY ENTREMATIC GROUP AB. 32" (813) CLEAR OPENING REQUIRED TO MEET ADA REQUIREMENT.

STANDARD FINISH: ANODIZED, CLEAR; DARK BRONZE;  
SPECIAL FINISHES ARE AVAILABLE

MAIN INCOMING POWER, (MIP)  
120V AC. 50/60HZ. 10A. BY  
ELECTRICAL CONTRACTOR  
LOW VOLTAGE WIRING, (LVW)  
SEPARATE FROM INCOMING  
MAIN POWER TO CONTROL

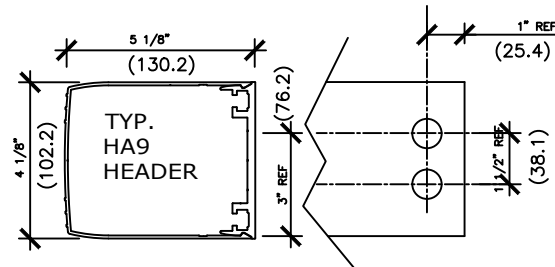
(MIP) ACCESS HOLE.  
(LVW)



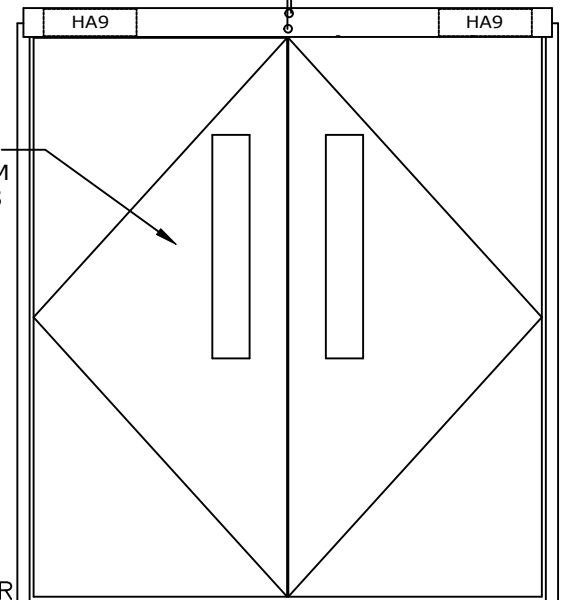
**ELEVATION**

TYP. RIGHT HAND APPLICATION IS SHOWN. (LEFT HAND OPPOSITE).

SWING HOLLOW METAL, ALUMINUM OR WOOD DOORS AND FRAMES BY OTHERS TYP.



ACCESS HOLES  
TYP. 3/4" DIA. (19)  
FOR CONDUIT FITTING.



**ELEVATION**

NOTE:  
ENTREMATIC GROUP AB, RESERVES THE RIGHT TO  
CHANGE & IMPROVE ITS PRODUCTS & SPECIFICATIONS  
WITHOUT NOTICE.

**ENTREMATIC**

TEL. 877-348-6837 (CANADA)  
www.ditecentrematic.ca  
TEL. 833-921-1337 (USA)  
www.ditecentrematic.us

JOB NAME:	SHEET NO. 9
LOCATION:	
DOOR NUMBER:	SECTION HA9