

APPLICATION:
LOW ENERGY OPERATOR
PAIR DOORS CENTER PIVOT

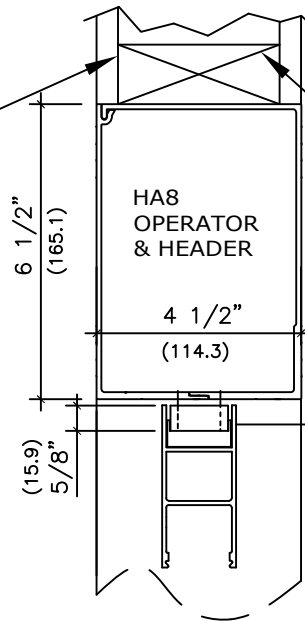
NOTE: DRAWING IS DIMENSIONED IN BOTH INCHES & METRIC (mm)
 AUTOMATIC SWING DOOR OPERATOR SHALL BE "HA8" CETL USA APPROVED, CONFORMING TO UL STD. 325 & ANSI-BHMA STD. A156.19 FIRE RATED TO UL STD. 10(B); UL STD. 10(C), CERTIFIED TO CAN. CSA STD. C22.2#247 AS MANUFACTURED BY ENTREMATIC GROUP AB. 32" (813) CLEAR OPENING REQUIRED TO MEET ADA REQUIREMENT.

STANDARD FINISH: ANODIZED, CLEAR; DARK BRONZE;
 SPECIAL FINISHES ARE AVAILABLE

120V AC. 60HZ. 15A.
 BY ELEC. CONTRACTOR.

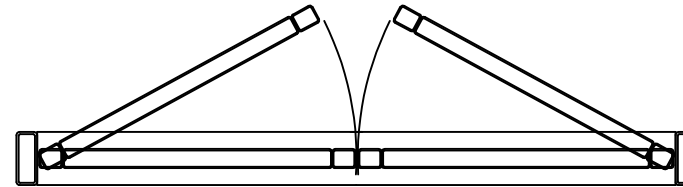
DRYWALL BY OTHERS

REINFORCEMENT BY OTHERS



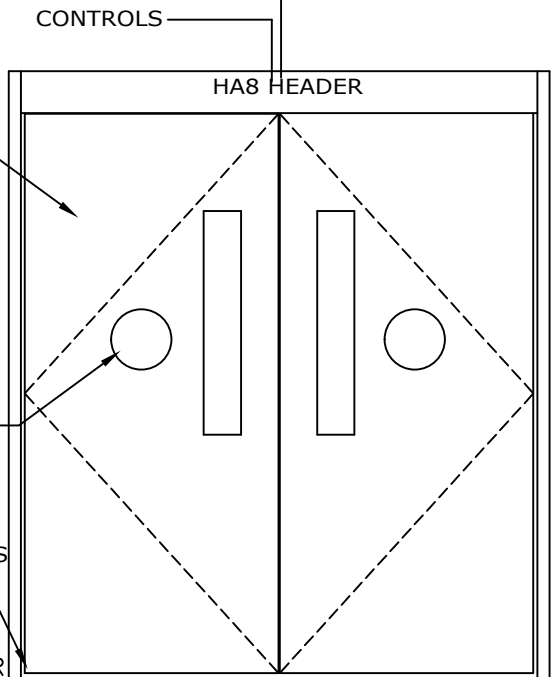
VERTICAL SECTION

NOTE:
 HINGE SIDE
 TOP RAIL
 NEEDS CUT
 OUT ON BACK
 OF DOOR FOR
 OPERATOR ARM
 (MIN 1 5/8" x
 DEPTH OF WEB)
 (41.3)

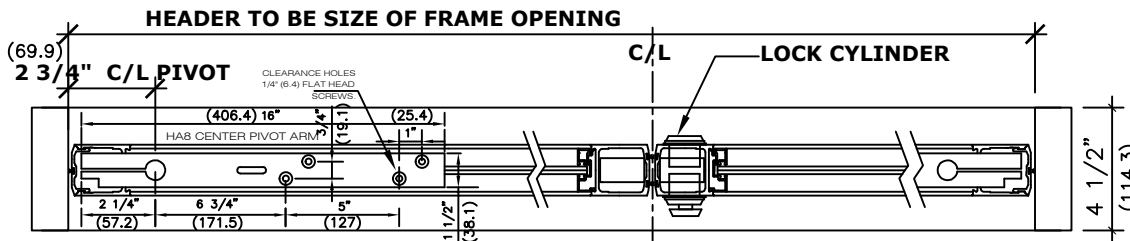


**INTERIOR
 PLAN**

SWING HOLLOW
 METAL, ALUMINUM
 OR WOOD DOORS
 AND FRAMES BY
 OTHERS



ELEVATION



**INTERIOR
 HORIZONTAL SECTION**

NOTE:
 ENTREMATIC GROUP AB, RESERVES THE RIGHT TO
 CHANGE & IMPROVE IT'S PRODUCTS & SPECIFICATIONS
 WITHOUT NOTICE.

ENTREMATIC

TEL. 877-348-6837 (CANADA)
 www.ditecentrematic.ca
 TEL. 866-901-4284 (USA)
 www.ditecentrematic.us

JOB NAME:	SHEET NO. 9
LOCATION:	
DOOR NUMBER:	SECTION HA