

MANUAL SLIDING DOOR SYSTEM SHALL BE "DS9" AS ENGINEERED, MANUFACTURED & ASSEMBLED BY ENTREMATIC GROUP AB.

STANDARD FINISH: ANODIZED, CLEAR; DARK BRONZE; SPECIAL FINISHES ARE AVAILABLE

APPLICATION:
TRACKLESS LEFT HAND, FBO MANUAL SLIDER SYSTEM.

NOTE: DRAWING IS DIMENSIONED IN BOTH INCHES & METRIC (mm)

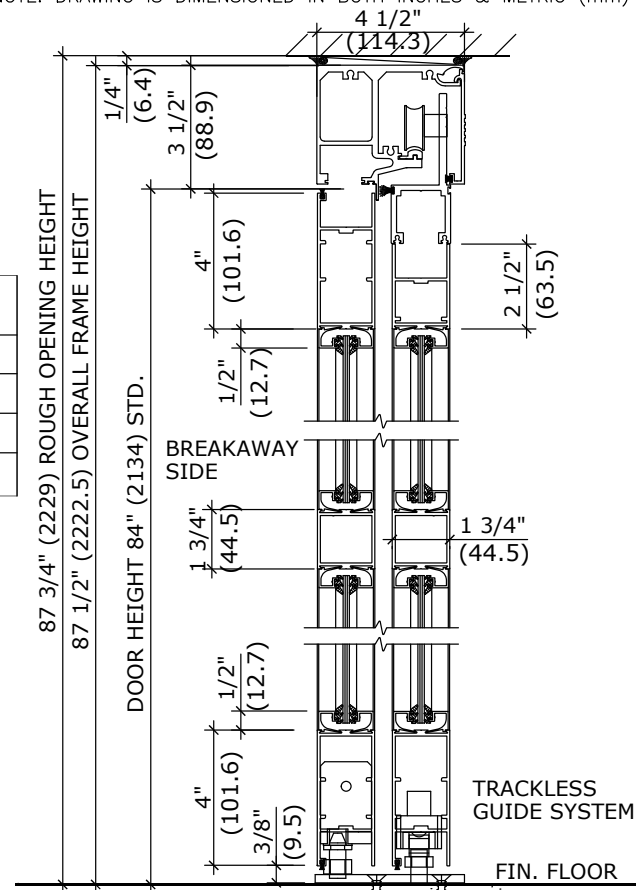
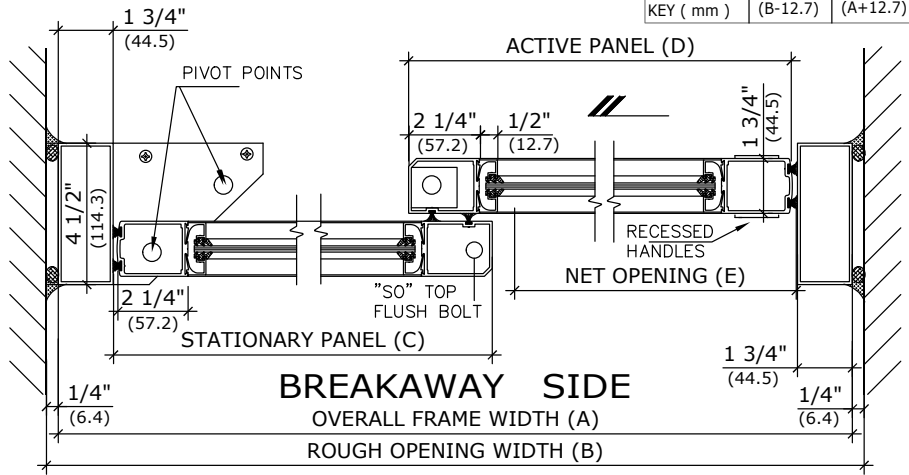
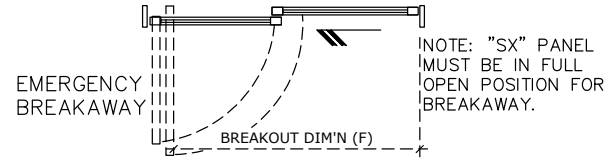
UNIT DESCRIPTION

DITEC

SO-SX: TRACKLESS - OVERHEAD CONCEALED F.B.O. L.H. SINGLE SLIDE NARROW STILE MANUAL DOOR SYSTEM.

STD. PACKAGE SHALL INCLUDE LOW PROFILE HEADER, FRAME, AND DOORS WITH MUNTIN, BOTTOM RAILS WITH CONCEALED SWEEP, BRUSH-PILE WEATHER STRIPPING, EMERGENCY BREAKAWAY, GLAZING STOPS FOR T.G. AND RECESSED HANDLES. BOTTOM GUIDE SYSTEM SHALL BE TRACKLESS.

SIZE	OVERALL FRAME A WIDTH	ROUGH OPENING B WIDTH	SIDELITE PANEL C WIDTH	ACTIVE PANEL D WIDTH	NET DOOR E OPENING	BREAK OUT F DIM'N
84"	84" (2133.6)	84 1/2" (2146.3)	38 5/8" (981.1)	44 5/8" (1133.5)	33 1/4" (844.6)	76" (1930.4)
96"	96" (2438.4)	96 1/2" (2451.1)	44 5/8" (1133.5)	50 5/8" (1285.9)	39 1/4" (997)	88" (2235.2)
108"	108" (2743.2)	108 1/2" (2755.9)	50 5/8" (1285.9)	56 5/8" (1438.3)	45 1/4" (1149.4)	100" (2540)
KEY INCHES	[B-1/2]	[A+1/2]	[A/2-3 3/8]	[A/2+2 5/8]	[A/2-8 3/4]	[A-8]
KEY (mm)	[B-12.7]	[A+12.7]	[A/2-85.7]	[A/2+66.7]	[A/2-222.3]	[A-203.2]



1 HORIZONTAL SECTION

REFER TO RELEVANT (LOCAL, STATE, NATIONAL OR AHJ) BUILDING CODE FOR MIN DOOR HEIGHT & MIN/MAX WIDTH ALLOWABLE FOR EGRESS REQUIREMENT.

NOTE:
ENTREMATIC GROUP AB, RESERVES THE RIGHT TO CHANGE & IMPROVE IT'S PRODUCTS & SPECIFICATIONS WITHOUT NOTICE.

ENTREMATIC

TEL. 877-348-6837 (CANADA)
www.ditecentrematic.ca
TEL. 866-901-4284 (USA)
www.ditecentrematic.us

SHEET TITLE:			SHEET NO. 1
ARCHITECT:			
CONTRACTOR:			SECTION DS9
DETAIL SCALE	DRAWN BY	DATE	