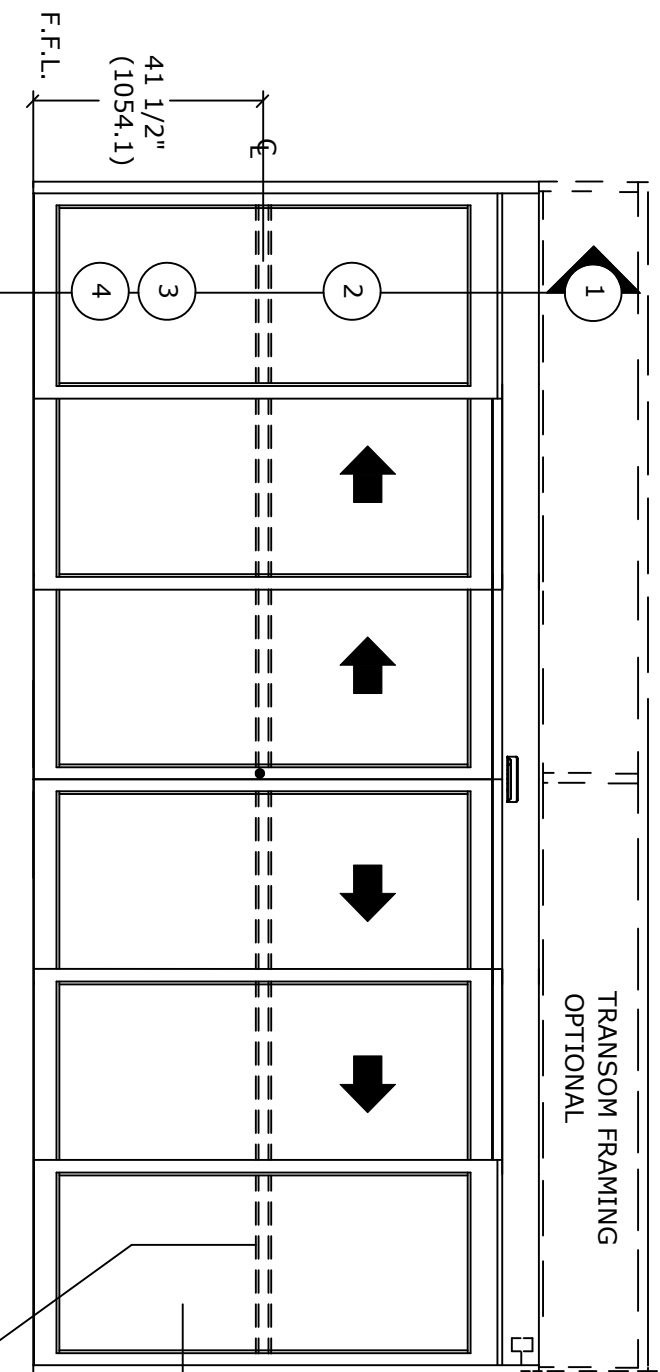


## DS-20-6-TFB

CONCEALED, FULL BREAKOUT, BI-PART  
TELESCOPIC SLIDING DOOR SYSTEM

ELECTRICAL SUPPLY  
110 VAC. 60 HZ. 10A.  
BY ELEC. CONTR. TO  
JUNCTION BOX.



5 JAMB

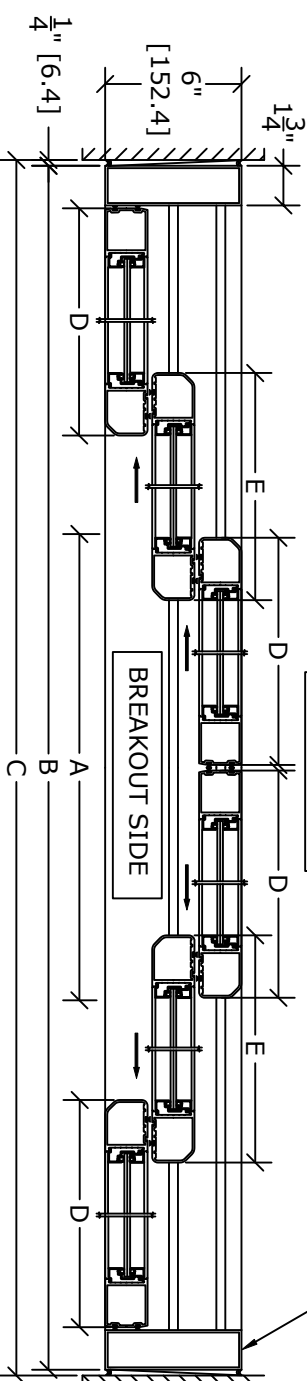
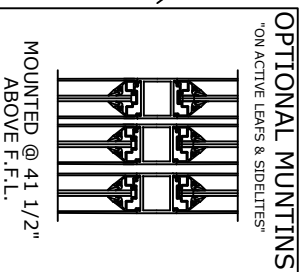
COVER SIDE

BREAKOUT SIDE

EXTERIOR ELEVATION

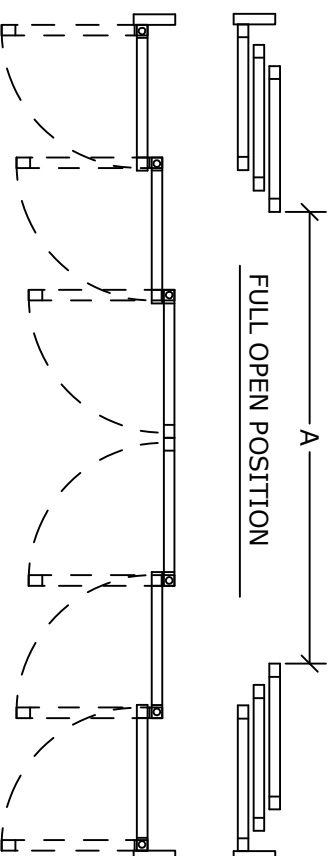
BREAKOUT SIDE

Optional Factory Prep  
Switch Location @  
74-1 1/2"H

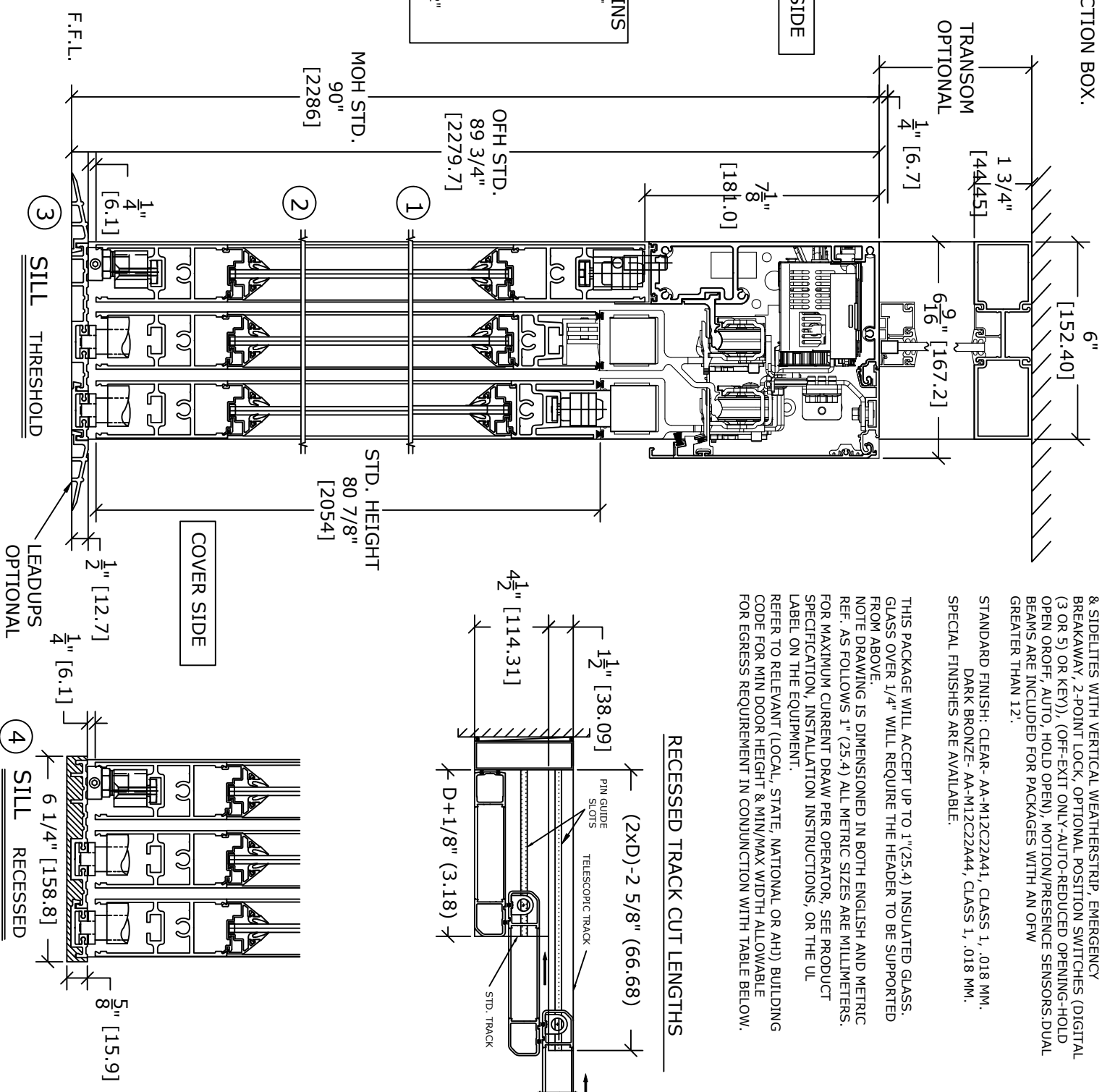


SI500 OHC	DOOR OPENING A	OVERALL FRAME WIDTH B	MASONRY OPENING WIDTH C	ACTIVE & SIDELITE LEAF WIDTH D & E
10"	59 3/16" (1503.4)	120" (3048)	120 1/2" (3060.7)	21 3/16" (538.2)
12"	75 3/16" (1909.8)	144" (3657.6)	144 1/2" (3670.3)	25 3/16" (639.8)
14"	91 3/16" (2316.2)	168" (4267.2)	168 1/2" (4279.9)	29 3/16" (741.4)
16"	107 3/16" (2722.6)	192" (4876.8)	192 1/2" (4889.5)	33 3/16" (843)
KEY	(2B/3)-(528.6)	(C-1/2") (B+12.7)	(B+12.7)	(B/6)+13/16" (B/6)+(30.2)
		WIDTH - "D" & "D"	(B/6)-3/5/8" (B/6)-(92.08)	
		WIDTH - "E"	(B/6)-3/7/8" (B/6)-(98.43)	
		HEIGHT	OFH-15 7/8" OFH-(403.2)	

\*\* NARROW STILE RAILS W/ 1/4" GUTTER, NO MUTTINGS



VIEW FROM BREAKOUT SIDE



NOTE: THE STANDARD PACKAGE CONSISTS OF:  
THE AUTOMATIC OPERATOR & WEATHERSTRIP, FRAMES, DOORS  
& SIDELITES WITH VERTICAL WEATHERSTRIP, EMERGENCY  
BREAKAWAY, 2-POINT LOCK, OPTIONAL POSITION SWITCHES (DIGITAL  
(3 OR 5) OR KEY)), (OFF-EXIT ONLY-AUTO-REDUCED OPENING-HOLD  
OPEN DROFF, AUTO, HOLD OPEN), MOTION/PRESENCE SENSORS DUAL  
BEAMS ARE INCLUDED FOR PACKAGES WITH AN OFW  
GREATER THAN 12".

STANDARD FINISH: CLEAR-AA-M12C22A41, CLASS 1, .018 MM.  
DARK BRONZE-AA-M12C22A44, CLASS 1, .018 MM.  
SPECIAL FINISHES ARE AVAILABLE.

THIS PACKAGE WILL ACCEPT UP TO 1" (25.4) INSULATED GLASS.  
GLASS OVER 1/4" WILL REQUIRE THE HEADER TO BE SUPPORTED  
FROM ABOVE.  
NOTE DRAWING IS DIMENSIONED IN BOTH ENGLISH AND METRIC  
REF. AS FOLLOWS 1" (25.4) ALL METRIC SIZES ARE MILLIMETERS.  
FOR MAXIMUM CURRENT DRAW PER OPERATOR, SEE PRODUCT  
SPECIFICATION, INSTALLATION INSTRUCTIONS, OR THE UL  
LABEL ON THE EQUIPMENT.  
REFER TO RELEVANT (LOCAL, STATE, NATIONAL OR AHD) BUILDING  
CODE FOR MIN DOOR HEIGHT & MIN/MAX WIDTH ALLOWABLE  
FOR EGRESS REQUIREMENT IN CONJUNCTION WITH TABLE BELOW.

DWG NO.	DRN BY	DATE	CHK BY	DATE	REV	DATE
	SAK	8/3/20	--	-/-	0.1	-/-