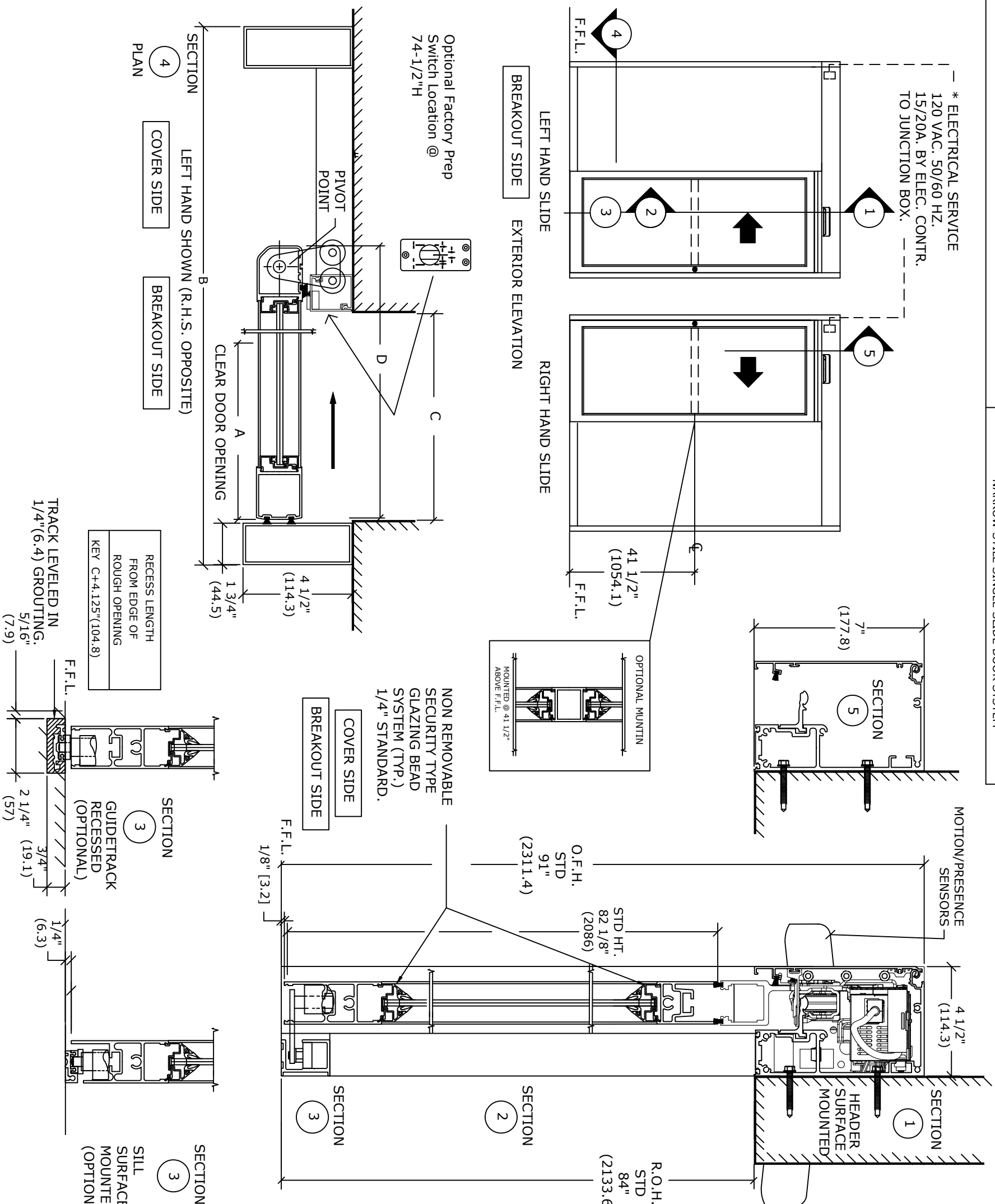


**DS-20-1-SFL**

SURFACE APPLIED, P-PANEL  
NARROW STYLE SINGLE SLIDE DOOR SYSTEM

\* ELECTRICAL SERVICE  
120 VAC. 50/60 HZ.  
15/20A. BY ELEC. CONTR.  
TO JUNCTION BOX.



MOTION/PRESENCE  
SENSORS

SECTION 1  
HEADER  
SURFACE  
MOUNTED

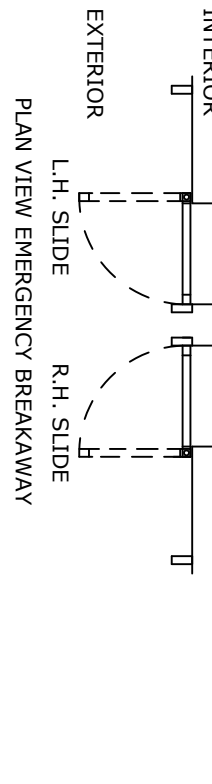
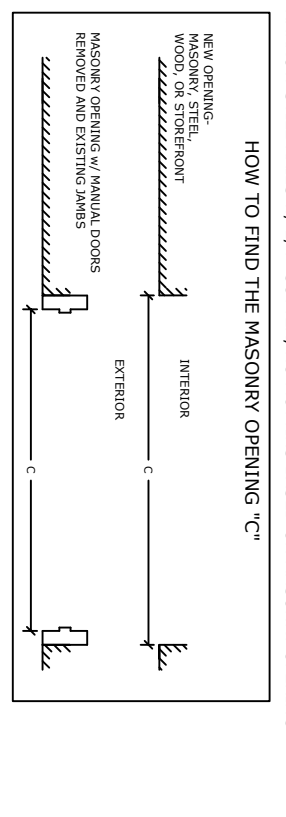
**NOTE:** THE STANDARD PACKAGE CONSISTS OF:  
THE AUTOMATIC OPERATOR & WEATHERSTRIP, FRAMES, DOORS WITH  
VERTICAL WEATHERSTRIP, EMERGENCY BREAKAWAY  
& 1-POINT LOCK, OPTIONAL POSITION SWITCHES (DIGITAL (3 OR 5) OR  
KEY (5)), (OFF-EXIT ONLY-AUTO-REDUCED OPENING-HOLD OPEN OR OFF,  
AUTO, HOLD OPEN), MOTION/PRESENCE SENSORS.  
STANDARD FINISH: CLEAR-AA-M12C22A41, CLASS 1, .018 MM.  
DARK BRONZE-AA-M12C22A44, CLASS 1, .018 MM  
SPECIAL FINISHES ARE AVAILABLE.  
THIS PACKAGE WILL ACCEPT UP TO 1" (25.4) INSULATED GLASS.

NOTE DRAWING IS DIMENSIONED IN BOTH ENGLISH AND METRIC  
REF. AS FOLLOWS: 1" (25.4) ALL METRIC SIZES ARE MILLIMETERS.  
\* FOR MAXIMUM CURRENT DRAW PER OPERATOR, SEE PRODUCT  
SPECIFICATION, INSTALLATION INSTRUCTIONS, OR THE UL  
LABEL ON THE EQUIPMENT.  
REFER TO RELEVANT (LOCAL, STATE, NATIONAL OR AHJ) BUILDING CODE FOR  
MIN DOOR HEIGHT & MIN/MAX WIDTH ALLOWABLE  
FOR EGRESS REQUIREMENT IN CONJUNCTION WITH TABLE BELOW.

MASONRY OPENING WIDTH C	ACTIVE LEAF WIDTH D	DOOR OPENING A	OVERALL FRAME HEIGHT	ROUGH OPENING HEIGHT	OVERALL FRAME WIDTH B
36" (914.4)	38 5/8" (981.1)	32 3/8" (822.3)	91" (2311.4)	84" (2134)	78 1/4" (1987.6)
42" (1066.8)	44 5/8" (1133.5)	38 3/8" (974.7)	91" (2311.4)	84" (2134)	90 1/4" (2292.4)
48" (1219.2)	50 5/8" (1283.9)	44 3/8" (1127.1)	91" (2311.4)	84" (2134)	102 1/4" (2597.2)
50 7/8" (1292.2)	53 1/2" (1358.9)	47 1/4" (1200.2)	91" (2311.4)	84" (2134)	108" (2743.2)
KEY	C+2 5/8" C+(66.7)"	4 7/8" C-(92.1)	ROH+7" ROH+(177.8)	OFH-7" OFH-(177.8)	2C+6 1/4" 2C+(158.8)"

OFW NOTE: CONSULT FACTORY FOR EXTENDED HEADERS.

STD. GLASS SIZE KEY*	WIDTH	HEIGHT
C-2 1/4"	C-2 1/4"	(OH)-15 7/8"
C-(57.2)	C-(57.2)	(OH)-(403.2)



DWG NO. \_\_\_\_\_

DRN BY	SAK	DATE	8/20/20	CHK BY	--	DATE	-/-/-	REV	0.1	DATE	-/-/-
--------	-----	------	---------	--------	----	------	-------	-----	-----	------	-------