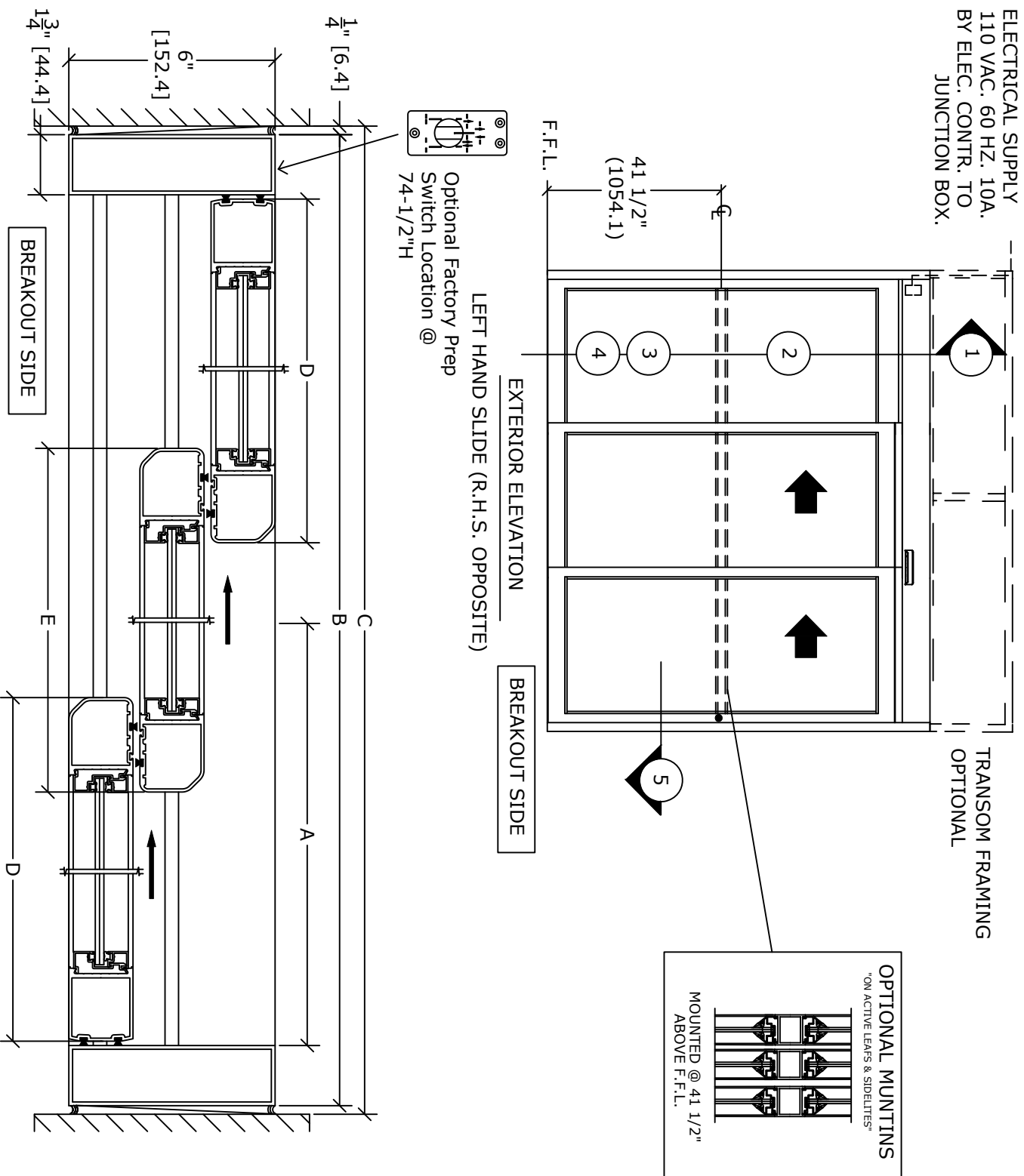


ELECTRICAL SUPPLY  
110 VAC. 60 HZ. 10A.  
BY ELEC. CONTR. TO  
JUNCTION BOX.



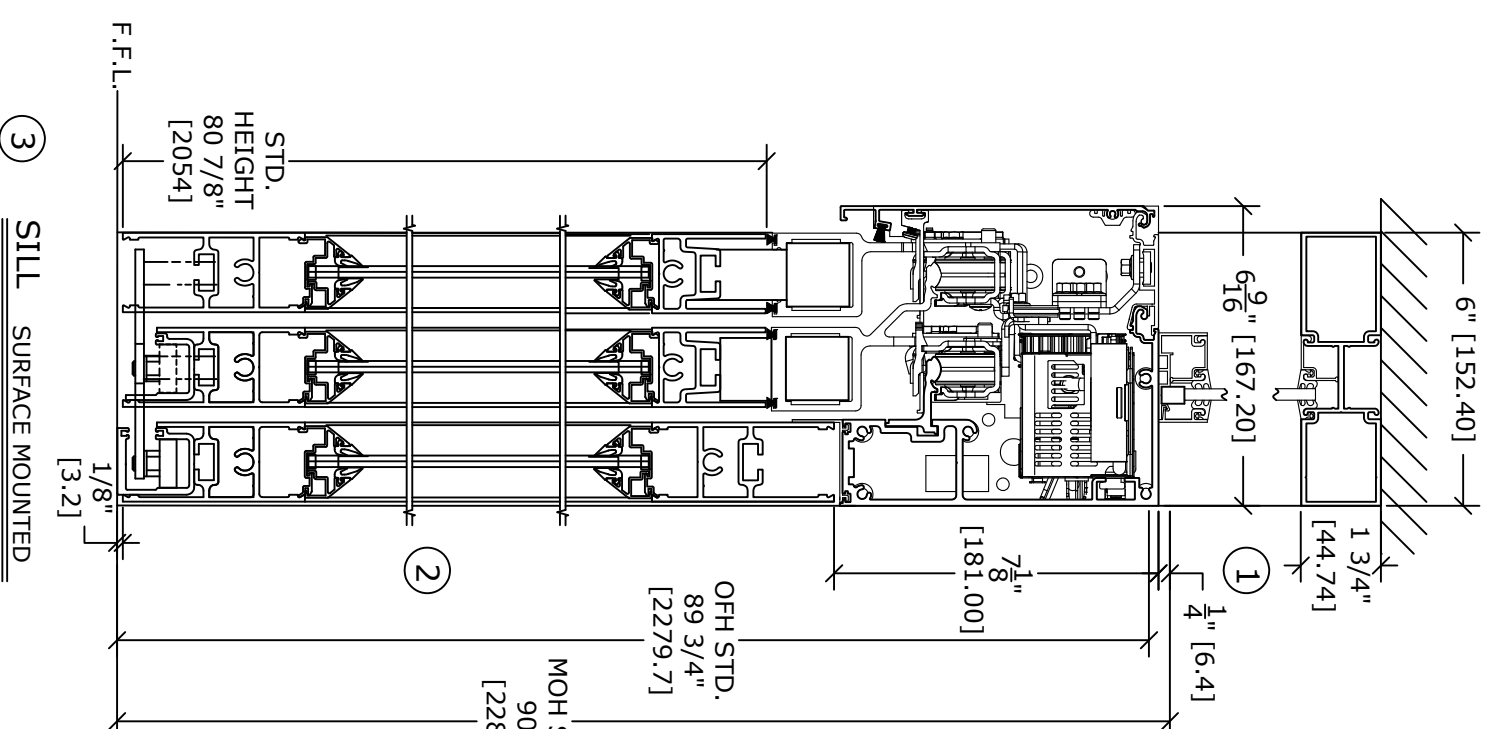
⑤ JAMB

DS20 OHC	DOOR OPENING A	OVERALL FRAME WIDTH B	MASONRY OPENING WIDTH C	ACTIVE & SIDELITE LEAF WIDTH D & E
9"	60 7/16" (1535.1)	108" (2743.2)	108 1/2" (2755.9)	36 9/16" (928.7)
10"	68 7/16" (1738.3)	120" (3048)	120 1/2" (3060.7)	40 9/16" (1030.3)
11"	76 7/16" (1941.5)	132" (3352.8)	132 1/2" (3365.5)	44 9/16" (1131.9)
12"	84 7/16" (2144.7)	144" (3657.6)	144 1/2" (3670.3)	48 9/16" (1233.5)
KEY	(2B/3)-11 9/16 (2B/3)-(293.7)	(C-1/2") (C-12.7)	(B+1/2") (B+12.7)	(B/3)+9/16" (B/3)+(14.3)

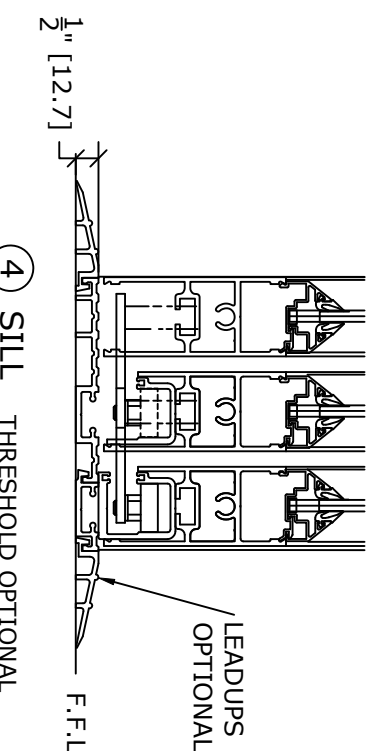
CONSULT FACTORY FOR SMALLER SIZES

STD. GLASS SIZE KEY*	WIDTH - "D" & "D"	
	WIDTH - "E"	HEIGHT

\* NARROW STILE RAILS W/ 1/4" GUTTER, NO MUNTINS

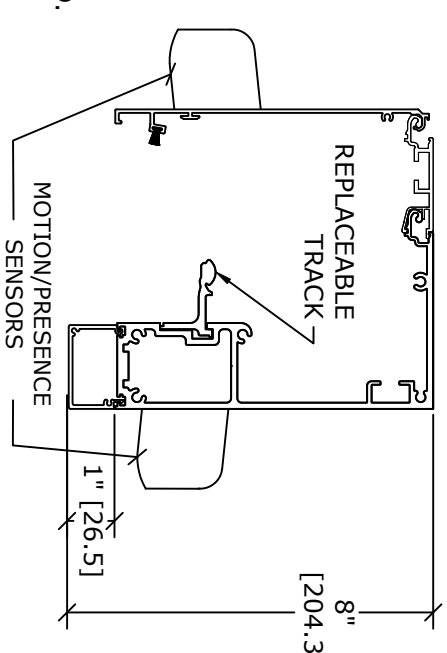


③ SILL SURFACE MOUNTED



④ SILL THRESHOLD OPTIONAL

NOTE: THE STANDARD PACKAGE CONSISTS OF: THE AUTOMATIC OPERATOR & WEATHERSTRIP, FRAMES, DOORS & SIDELITES WITH VERTICAL WEATHERSTRIP, EMERGENCY BREAKAWAY, 1-POINT LOCK, OPTIONAL POSITION SWITCHES (DIGITAL (3 OR 5) OR KEY (5)), (OFF-EXIT ONLY-AUTO-REDUCED OPENING-HOLD OPEN OR OFF, AUTO, HOLD OPEN) AND MOTION/PRESENCE SENSORS.  
STANDARD FINISH: CLEAR-AA-M12C22A41, CLASS 1, .018 MM. DARK BRONZE-AA-M12C22A44, CLASS 1, .018 MM. SPECIAL FINISHES ARE AVAILABLE.  
THIS PACKAGE WILL ACCEPT UP TO 1"(25.4) INSULATED GLASS. NOTE DRAWING IS DIMENSIONED IN BOTH ENGLISH AND METRIC REF. AS FOLLOWS 1" (25.4) ALL METRIC SIZES ARE MILLIMETERS. FOR MAXIMUM CURRENT DRAW PER OPERATOR, SEE PRODUCT SPECIFICATION, INSTALLATION INSTRUCTIONS, OR THE UL LABEL ON THE EQUIPMENT.  
REFER TO RELEVANT (LOCAL, STATE, NATIONAL OR AHD) BUILDING CODE FOR MIN DOOR HEIGHT & MIN/MAX WIDTH ALLOWABLE FOR EGRESS REQUIREMENT IN CONJUNCTION WITH TABLE BELOW.



FULL OPEN POSITION  
L.H.S. SHOWN (R.H.S. OPPOSITE)

VIEW FROM BREAKOUT SIDE  
L.H.S. SHOWN (R.H.S. OPPOSITE)

DWG NO.	DRN BY	DATE	CHK BY	DATE	REV	DATE
	SAK	5/7/20	--	-/-	0.1	-/-