

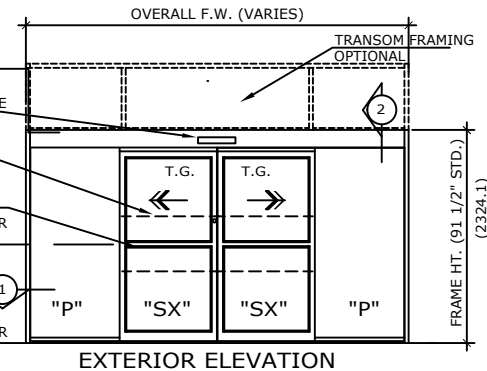
ELECTRICAL SERVICE  
120 VAC. 60 HZ. 15A  
TO JUNCTION BOX  
BY ELECTRICAL  
CONTRACTOR.

MOTION / PRESENCE  
INFRARED SENSOR

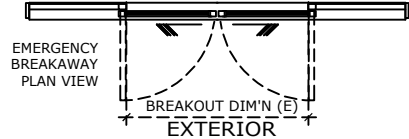
OPTIONAL HOLD-OPEN  
BEAMS C/L AT 24 & 48"  
(609.6 & 12.19.2) AFF

OPTIONAL  
MUNTIN BAR

42 7/16"  
(1078)  
FIN. FLOOR



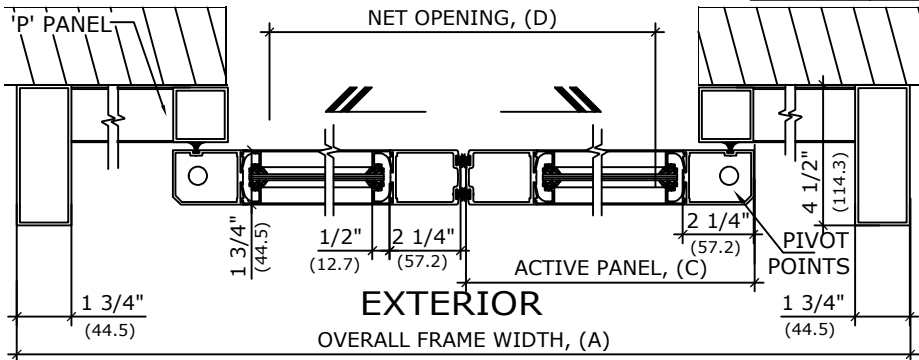
EXTERIOR ELEVATION



EMERGENCY  
BREAKAWAY  
PLAN VIEW

FINISHED OPENING, (B)

NET OPENING, (D)



EXTERIOR

OVERALL FRAME WIDTH, (A)

# 1 HORIZONTAL SECTION

REFER TO RELEVANT (LOCAL, STATE, NATIONAL OR AHJ) BUILDING CODE FOR  
MIN DOOR HEIGHT & MIN/MAX WIDTH ALLOWABLE FOR EGRESS REQUIREMENT.  
NOTE:  
ENTREMATIC GROUP AB, RESERVES THE RIGHT TO  
CHANGE & IMPROVE IT'S PRODUCTS & SPECIFICATIONS  
WITHOUT NOTICE.

AUTOMATIC SLIDING DOOR OPERATOR SHALL BE "DS-18"  
CUL USA APPROVED, CONFORMING TO UL STD. 325 &  
ANSI-BHMA STD. A156.10 CERTIFIED TO CAN. CSA STD.  
C22.2#24-93 AS MANUFACTURED BY ENTREMATIC GROUP  
AB.

STANDARD FINISH: ANODIZED, CLEAR; DARK BRONZE;  
SPECIAL FINISHES ARE AVAILABLE

## UNIT DESCRIPTION

### DITEC

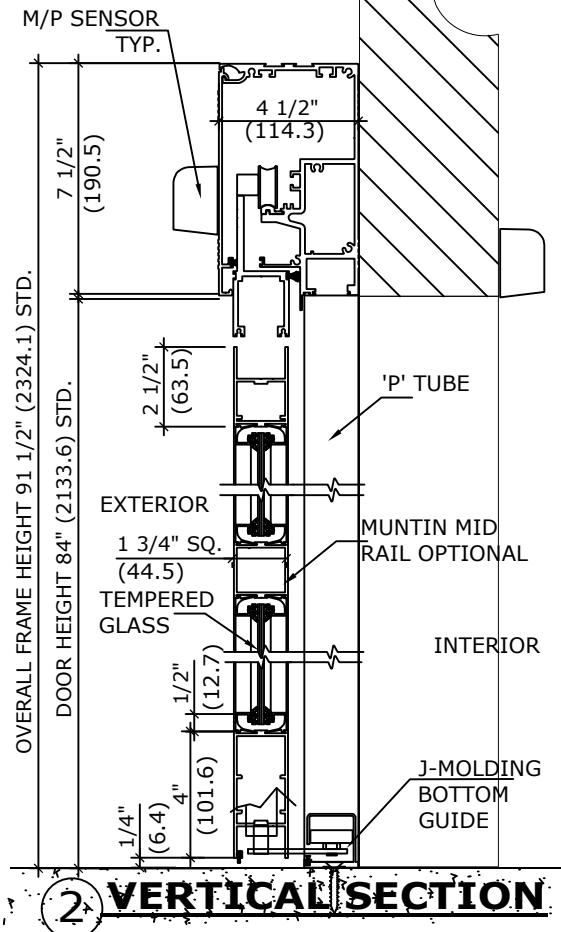
P-SX-SX-P : SURFACE MOUNTED SLIDER WITH 'P' PANEL,  
BI-PART SLIDING DOOR SYSTEM, NARROW STILE DOORS.

STD. PACKAGE SHALL INCLUDE AUTOMATIC OPERATOR, FRAME AND  
DOORS WITH MUNTIN, BOTTOM RAILS WITH CONCEALED  
SWEEP, BRUSH-PILE WEATHER STRIPPING, EMERGENCY BREAKAWAY,  
MS LOCK, GLAZING STOPS FOR TEMPERED GLASS,  
CONCEALED BOTTOM GUIDES IN 'J' MOLDING OF FIXED 'P' PANELS,  
3-POSITION SWITCH AND MOTION/PRESENCE SENSORS.

SIZE	OVERALL FRAME A WIDTH	FINISHED OPENING B WIDTH	ACTIVE PANELS C WIDTH	NET DOOR D OPENING	BREAK OUT DIM'N E
96"	96" (2438.4)	44 1/2" (1130.3)	24" (609.6)	37" (939.8)	44 1/2" (1130.3)
120"	120" (3048)	56 1/2" (1435.1)	30" (762)	49" (1244.6)	56 1/2" (1435.1)
144"	144" (3657.6)	68 1/2" (1739.9)	36" (914.4)	61" (1549.4)	68 1/2" (1739.9)
168"	168" (4267.2)	80 1/2" (2044.7)	42" (1066.8)	73" (1854.2)	80 1/2" (2044.7)
192"	192" (4876.8)	92 1/2" (2339.5)	48" (1219.2)	85" (2159)	92 1/2" (2349.5)
KEY [INCHES]	2[B+3 1/2]	[A/2-3 1/2]	[B/2+1 3/4]	[B-7 1/2]	[A/2-3 1/2]
KEY [mm]	2(B+88.9)	(A/2-88.9)	(B/2+44.5)	(B-190.5)	(A/2-88.9)

APPLICATION:  
SURFACE MOUNT BI-PART, AUTOMATIC  
SLIDING DOOR SYSTEM.

NOTE: DRAWING IS DIMENSIONED IN BOTH INCHES & METRIC (mm)



# 2 VERTICAL SECTION

# ENTREMATIC

TEL. 877-348-6837 (CANADA)  
www.ditecentrematic.ca  
TEL. 866-901-4284 (USA)  
www.ditecentrematic.us

SHEET TITLE:			SHEET NO. <b>12</b>
ARCHITECT:			
CONTRACTOR:			SECTION <b>DS</b>
SCALE:	DRAWN BY:	DATE:	